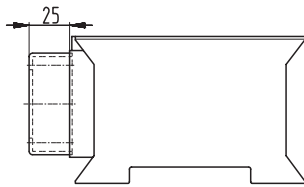


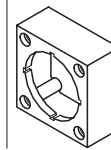
Schemazeichnung | Schematic drawing



Standardmaterial: PA 6 - 30GV, schwarz  
Standard material: PA 6 - 30GV, black

Zur Montage einer Schutzkontakt-Steckdose (offen).  
For mounting a panel socket (open), a CEE socket outlet.

Adapter



Bestellbezeichnung  
Type

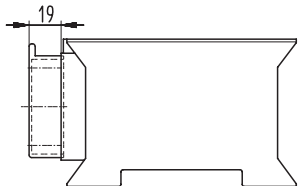
Adapter SC

Wz 6866

Art.-Nr.  
Art.-No

2829

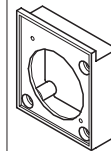
Schemazeichnung | Schematic drawing



Standardmaterial: PA 6 - 30GV, schwarz  
Standard material: PA 6 - 30GV, black

Zur Montage einer Schutzkontakt-Steckdose mit Klappdeckel.  
For mounting a panel socket with spring return cover.

Adapter



Bestellbezeichnung  
Type

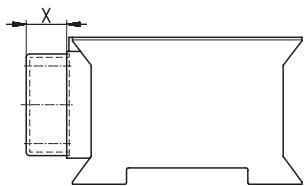
Adapter SK

Wz 6871

Art.-Nr.  
Art.-No

2583

Schemazeichnung | Schematic drawing



Standardmaterial: PA 6 - 30GV, schwarz  
Standard material: PA 6 - 30GV, black

Adapter universell einsetzbar | Adapter for different components  
Wz 6829 X = 23,5 mm  
Wz 7104 X = 25,5 mm

Spritzwassergeschützte Ausführung mit Gehäuse, Deckel und Dichtung möglich.

Gehäuse SWS → Seite 76

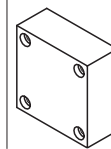
Deckel SWS → Seite 77

Spray protected version with box, lid and gasket possible.

Box SWS → page 76

Lid → page 77

Adapter



Bestellbezeichnung  
Type

Adapter G

Wz 6829

Adapter G/SWS

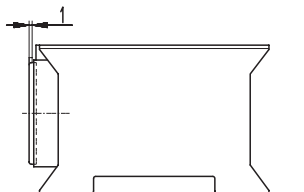
Wz 7104

Art.-Nr.  
Art.-No

2213

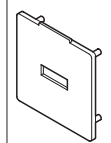
3408

Schemazeichnung | Schematic drawing



Standardmaterial: PA 6 - 30GV, schwarz  
Standard material: PA 6 - 30GV, black

Verschlußdeckel selbsthemmend  
Lid, self-locking



Bestellbezeichnung  
Type

Deckel I Lid

Wz 6883

Art.-Nr.  
Art.-No

2879